

School District of Greenfield Workplace Clinic

July 2017

The School District of Greenfield is excited to share progress on our partnership with Froedtert & Medical College of Wisconsin to operate the School District of Greenfield Workplace Clinic (GWC).

As construction is underway, here are some of the frequently asked questions.

What is the GWC?

The GWC is an on-site health care clinic available for all employees (regardless of insurance eligibility), and subscribers (spouses & dependents) to the District's health insurance plan.

Where will the GWC be located?

The GWC will be located on the campus of Greenfield High School, adjacent to the Fitness Center. Parking and entrance will be on the south side of the High School (Natatorium entrance; Door 11). The GWC will occupy a portion of the team/detention room.

Who will be the health care provider at the GWC?

When you visit the GWC, it will be staffed by employees of Froedtert & Medical College of Wisconsin. Specifically, there will be an Advanced Practice Provider (APP) who will be a Physician Assistant or Nurse Practitioner. The District has selected **Angie Montoto Farley, P.A.**, to serve as the APP for the WPC. There will be multiple opportunities for everyone to meet Angie and learn more about the care available at the GWC. Welcome Angie!

When will the GWC be open?

A "Grand Opening" for the GWC is scheduled for September 11, 2017. Initially, the GWC will be open three days/week for a total of 20

hours/week. The specific hours of operation are yet to be determined.

How do I schedule a visit?

To schedule an appointment, a dedicated phone line will be established. More information will be available at a later date.

Will the GWC dispense pharmaceuticals?

Yes, the APP has the authority to prescribe pharmaceuticals, and the GWC will carry frequently distributed medications and pharmaceuticals.

What does it cost to visit the GWC?

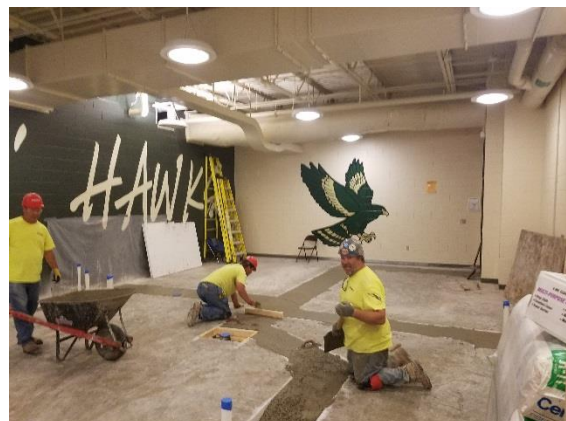
There is no cost to employees and subscribers to the District's health insurance plan.

What about the FastCare Clinics located at the Meijer stores?

If the GWC is unavailable, subscribers to the District's health insurance plan may visit one of the FastCare Walk-In clinics located in select Meijer stores (including the store at 60th & Layton). The FastCare clinics are operated by Froedtert & Medical College of Wisconsin. Effective October 1, 2017, **there is no fee for visiting one of the FastCare Walk-In clinics.**

Can I still see my doctor or APP?

Yes. The GWC is a benefit for employees (and subscribers to the plan). The District believes that providing free and convenient access to health care will help us be healthier, happier, and more engaged.



6/28/2017. Sewer lines added for sinks and restroom.